



modalART
shipping containers

MODALART CONTAINER CONVERSIONS
CUSTOMIZATION – MODIFICATION – PAINTING

www.modalart.com



40 FOOT CONTAINER



20 FOOT CONTAINER

- DOUBLE-PANE LOCKABLE WINDOWS WITH SECURITYSCREENS
- STEEL ENTRY DOOR WITH WINDOW AND DEAD BOLT LOCK
- 2" x 4" WOOD FRAMING CONSTRUCTION WITH R-13 INSULATION
- SOLID WOOD WALL COVERING WITH FINISHED SHEETROCK CEILING
- ELECTRIC BASEBOARD HEAT WITH THERMOSTAT CONTROL
- WALL-MOUNT A/C

- STEEL 2-DRAWER FILE CABINET
- FORMICA COUNTER TOP
- FOLDING PLAN TABLE
- FLUORESCENT LIGHT FIXTURES
- WOOD FLOOR PAINTED GRAY

Office & Storage Combos



<----- 20 FEET OF STORAGE -----> <-----20 FEET FOR OFFICE ----->
 <----- 24 FEET OF STORAGE -----> <-----16 FEET FOR OFFICE -->

WE BUILD TO YOUR DESIGNS & SPECIFICATIONS.

ASK US FOR A FREE QUOTE!

Table of Contents:

Office Containers

20'	Built with New Container	pg. 4
20'	Built with Used Container	pg. 6
40'	Office (16') & Storage (24') Combo	pg. 7
40'	Built with used container	pg. 13

Mobile Shop / Gallery pg. 15

Double Story Container House pg. 16

Storage Units

40'	with Steel Roll-up Doors and Expanded Metal Partitions	pg. 17
20'	with Steel Roll-up Doors	pg. 19

Custom Painting pg. 20

Modification Wish List pg 22

Custom Accessories pg 25

20'

Office Container

Built with new container

Technical Specifications

- 3 Windows - "WELD-n-GO" TM Dual Pane 36"x36" slider with grids and security bars
- 1 Man Door - "WELD-n-GO" TM 3068 door with 3 Hour Fire Rating and Heavy Duty hinges
- Door hardware and accessories
- CSIP - Container Structural Insulated Panels with R-13 Rating (19 panels per 20' office kit, 2 3/4" thick wall)
- A/C Unit - 8,000 BTU A/C with Heat Pump 110 volt (can upgrade to 12,000 BTU unit / 220 volt)
- A/C Cage - Designed to fit above A/C unit
- Electrical Package - Includes 5 Plug Outlets, 1 Switch Outlet, 14/2 AWG Wire (for 120V), 125 AMP Breaker Box, Exterior Junction Box, (2) 15 AMP Breakers, (1) 20 AMP Breaker, (2) Fluorescent Lights (2 bulbs, 4' long)
- Wood Floor Paint - Gray Porch and Floor paint





20'

Office Container

Built with used container

Technical Specifications

- 3068 Steel Personnel Door
- 36" x 36" Vinyl Window
- 10,000 BTU Heat/AC Unit
- Counter Top
- Paint Floor
- R13 Encapsulated Insulation
- Paneled Walls (Including Corner / Flat/Shoe Molding)
- Electrical - Panel Box with 7 outlets evenly spaced around the 20' container & 2 Fluorescent Lights



modalART
Cargo Containers



40'

Office Container
Office (16') & Storage (24')
Combo built with new
container

Technical Specifications

- 16' office space and 24' storage space
- 2 Windows - "WELD-n-GO" TM Dual Pane 36"x36" slider with grids and security bars
- 1 Man Door - "WELD-n-GO" TM 3068 door with 3 Hour Fire Rating and Heavy Duty hinges
- Door hardware and accessories
- CSIP - Container Structural Insulated Panels with R-13 Rating (19 panels per 20' office kit, 2 3/4" thick wall)
- A/C Unit - 8,000 BTU A/C with Heat Pump 110 volt (can upgrade to 12,000 BTU unit / 220 volt)
- A/C Cage - Designed to fit above A/C unit
- Electrical Package - Includes 5 Plug Outlets, 1 Switch Outlet, 14/2 AWG Wire (for 120V), 125 AMP Breaker Box, Exterior Junction Box, (2) 15 AMP Breakers, (1) 20 AMP Breaker, (2) Fluorescent Lights (2 bulbs, 4' long)
- Wood Floor Paint - Gray Porch and Floor paint.











40'

Office Container

Built with used container

Technical Specifications

- 3068 Steel Personnel Door
- 36" x 36" Vinyl Window
- 10,000 BTU Heat/AC Unit
- Counter Top (Qty: 2 in 40' Full Office & 1 in 40' Combo)
- Paint Floor
- R13 Encapsulated Insulation
- Paneled Walls (Including Corner / Flat / Shoe Molding)
- Electrical - Panel Box with 7 outlets evenly spaced around the 20' container & 2 Fluorescent Lights





40'

Mobile Shop/Gallery

Technical Specifications

Dimensions: Length: 11.7M, Width: 2.435M, Height: 2.9M.

Footprint Area: 28.49M²

Live load capacity of roofing: 0.5kN/m²

External and internal wall heat transmission coefficient: 0.35 Kcal/m²hc

Package: flat package, all components are well wrapped.

Frame Structure: cold formed profile steel, 4mm thick

Corrosion Protection: polishing, derusting, sand blasting

Primer Coat: epoxy zinc-rich primer, two layers

Finishing Coat: alkyd honed painting

Flooring: 25mm calcium silicate board + vinyl flooring

Wall panel: 60mm EPS steel sandwich panel, with metal strip on side

Roof: corrugated steel plate, 2mm thick

Ceiling: 50mm EPS steel sandwich panel with mineral wool

Door: Aluminum frame with composite door

Window: UPVC swing window or sliding window

Internal Skirting: plastic, in white



20'

Double Storey Container House

This is just one of our designs. Please contact us with your specifications for a free quote.



modalART
cargo containers

40' Used Container

with (4) 8' Wide 26' Gauge Steel Roll-up Doors and Expanded Metal Partitions





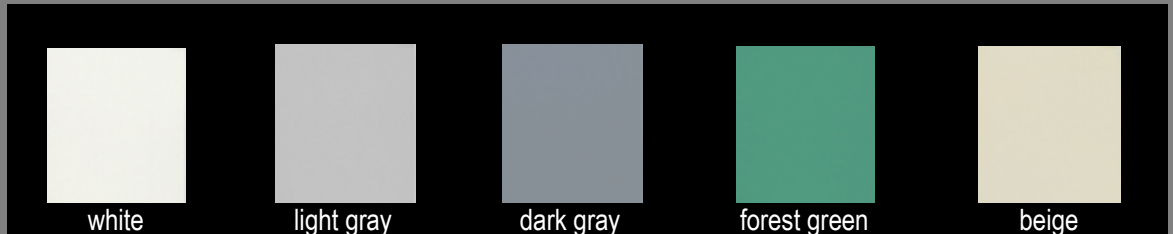
20' Used Container

with (2) 8' Wide 26' Gauge Steel Roll-up Doors



Custom Painting

Choose your custom paint colors or logos for your purchased containers, or select from our stock colors:



After applying the color, containers receive a **rust-inhibiting urethane enamel** coating for a long-lasting protective coating.





Modification Wish List

PLEASE COMPLETE, AND RETURN TO [INFO\(AT\)MODALART.COM](mailto:INFO(AT)MODALART.COM)

	CUSTOMER'S COMMENTS/SAMPLE SPECIFICATIONS	Accurate per: PART NO'S
<u>CONTAINER SIZES</u>		
<input type="checkbox"/> 10' Manufactured		
<input type="checkbox"/> 20' DV Standard (8'6" tall)		
<input type="checkbox"/> 40' DV Standard (8'6" tall)		
<input type="checkbox"/> 40' High Cube (9'6" tall)		
<input type="checkbox"/> 45' High Cube (9'6" tall)		
<input type="checkbox"/> Other Custom Size		
<u>Container Grade</u>		
<input type="checkbox"/> WWT		
<input type="checkbox"/> CW		
<input type="checkbox"/> IICL / LEASING GRADE		
<input type="checkbox"/> NEW / ONE TRIP		
<u>MOBILE OFFICE OPTIONS</u>		
<input type="checkbox"/> Full Office Container		
<input type="checkbox"/> Office Combo / Office Container with Storage Section		
<u>STRUCTURAL OPTIONS</u>		
<input type="checkbox"/> Clear Span		
<input type="checkbox"/> Custom Wall Openings	https://modalart.com/press_house.htm	
<u>INSULATION & FRAMING</u>		
<input type="checkbox"/> 2 x 4 studs, R13 insulation and luan plywood cover	CSIP - Container Structural Insulated Panels with R-13 Rating (19 panels per 20' office kit, 2 3/4" thick wall)	
<input type="checkbox"/> Modalart Insulation Kits		
<u>PARTITIONS</u>		
<input type="checkbox"/> Plywood		
<input type="checkbox"/> Sheet metal		
<input type="checkbox"/> Extended metal		
<u>HYDRAULIC DOORS & AWNINGS</u>		
<u>DOORS</u>		
<input type="checkbox"/> Roll-Up Doors:	20' Gauge galvanized steel;	

<input type="checkbox"/> Interior or Exterior Mount		
<input type="checkbox"/> 6'4" or <input type="checkbox"/> 7'4" High	Typically 7' high depending on standard or HC container	
<input type="checkbox"/> 4' Wide		
<input type="checkbox"/> 6' Wide		
<input type="checkbox"/> 7' Wide		
<input type="checkbox"/> 8' Wide		
<input type="checkbox"/> 10' Wide		
Replace swing doors	Expect swing door replacement surcharge	
<input type="checkbox"/> Interior mount or		
<input type="checkbox"/> Exterior mount	Exterior mounts will complicate delivery	
<input type="checkbox"/> Personnel Entry Doors	Man Door - "WELD-n-GO" TM 3068 door with 3 Hour Fire Rating and Heavy Duty hinges	
<input type="checkbox"/> Interior Doors		
WINDOWS		
<input type="checkbox"/> 40"X40" Dual Pane		
<input type="checkbox"/> 36"X36" Vinyl	"WELD-n-GO" TM Dual Pane 36"x36" slider with grids and optional security bars	
<input type="checkbox"/> Concession stand windows / awnings		
SKYLIGHTS		
<input type="checkbox"/> Domed		
<input type="checkbox"/> Flat		
HIGH-SECURITY LOCK BOXES & SECURITY FEATURES		
<input type="checkbox"/> Lock Boxes		
<input type="checkbox"/> Cargo Door Locks		
<input type="checkbox"/> Personnel Door Locks		
<input type="checkbox"/> Door Bars		
<input type="checkbox"/> Panic Bars	<u>NYS Code requirements for storage containers deployed at schools - exiting and ventilation requirements</u> <u>http://www.p12.nysed.gov/facplan/articles/shipping_containers_for_storage.html</u>	
<input type="checkbox"/> Window Bars		
<input type="checkbox"/> Security Screens		
COOLING & HEATING		
<input type="checkbox"/> Louver Vents		
<input type="checkbox"/> Rooftop Turbine Vents		

Heating / Air Conditioning		
<input type="checkbox"/> Window HVAC	A/C Unit - 8,000 BTU A/C with Heat Pump 110 volt (can upgrade to 12,000 BTU unit / 220 volt), or Friedrich, <i>Model: EP24G33B</i> , 23,500 BTU 8.5 EER Chill Window Air Conditioner w/ Heat 230V installed with cage	
<input type="checkbox"/> Wall mount HVAC (BARD Unit)		
<input type="checkbox"/> Floor Heating		
<input type="checkbox"/> Thermostat		
ELECTRICAL FIXTURES & WIRING		
Electrical Package	Electrical Package - Includes 5 Plug Outlets, 1 Switch Outlet, 14/2 AWG Wire (for 120V), 125 AMP Breaker Box, Exterior Junction Box, (2) 15 AMP Breakers, (1) 20 AMP Breaker, (2) Fluorescent Lights (2 bulbs, 4' long)	
20' Container (2 Fixtures - 110 Volt - Surface Mount)		
40' Container (4 Fixtures - 110 Volt - Surface Mount)		
WIRING		
<input type="checkbox"/> Ethernet & Electrical	Ethernet & Electrical Cat 5 & 20A/120V duplex receptacles for desk-area connections	
LIGHTING		
<input type="checkbox"/> Fluorescent lighting		
<input type="checkbox"/> Bulb lighting		
INTERIOR FINISHING		
<input type="checkbox"/> Wall Covering		
<input type="checkbox"/> Floor Covering		
<input type="checkbox"/> Shelving		
<input type="checkbox"/> Counter Top	Counter top: linear foot, the finished material is Corrian	
E-TRACK	https://modalart.com/upgrades1.htm#E-Track	
ESCAPE HATCH	https://modalart.com/upgrades1.htm#Escape%20Hatch	
<u>PAINTING</u>	Sherwin Williams Industrial Enamel. is a heavy duty oil based paint available only in semi-gloss.	
<input type="checkbox"/> Interior Paint /		
<input type="checkbox"/> Exterior Paint		
<input type="checkbox"/> Custom Paint Colors	http://www.modalart.com/ral_colors.htm	
<input type="checkbox"/> / Logos		

<input type="checkbox"/> Floor Paint	Wood Floor Paint - Gray Porch and Floor paint	
DELIVERY	Ship to:	
OTHER		

CUSTOM ACCESSORIES

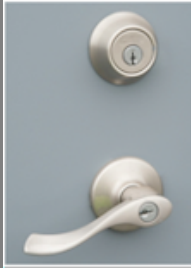
Floor Heating



AC



Locks



Lights



Electrical (Fuse Box)



Thermostat



File Cabinets



Folding Tables



modalART

Personnel Door



Interior Door



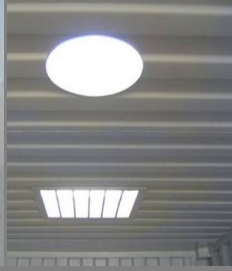
Window



Security Bars



Skylights



Wall Mount



Rooftop Turbine Vents



Louver Vents



Lock Box



Container Door Locks



Panic Bar



Shelving



Cutouts & Reinforcements



E-Track



Escape Hatch



Please tell us where you would like accessories to be positioned.
For example: One 40"x40" dual pane window with security bars: Three feet from Rear, and two feet from Top.



Please share your comments and instructions: