

QUICK BUILD CONTAINERS

www.modalart.com



modal ART
shipping containers

modalART



modalART



Panelized ModalART Quick Build – Container Clients and End-Users

- End-users come from many different industries – public and private sectors.
- Panelized storage structure offers flexibility that no other shed does:
 - Individual panels can be carried by man power into the tightest of spaces and through the smallest doorways.
 - Quick assembly and easy knock-down of units allow make relocation a breeze.
 - Galvanized steel structure ensures a long lasting product.
 - Assortment of accessories makes the expandable units ever so versatile: Shelving systems, access ramp, etc.



Above: Two 7' x 10' ModalART Quick Build containers at fire remediation project in Jacksonville, FL.

modalART Private Sector



Small business owner



Residential garden shed

modalART Industry



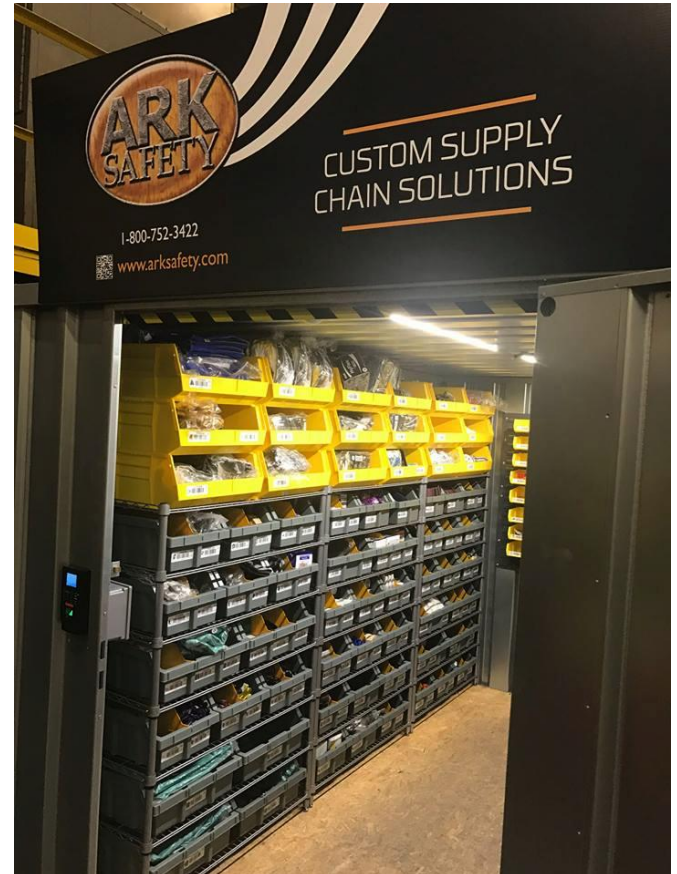
San Francisco Airport – United Airlines needed extra storage in confined spaces for its ground maintenance crew.

Lamor – near shore oil spill clean up service

modalART Industry



UPS/Fedex delivery concierge (above) and inventory management system (right)





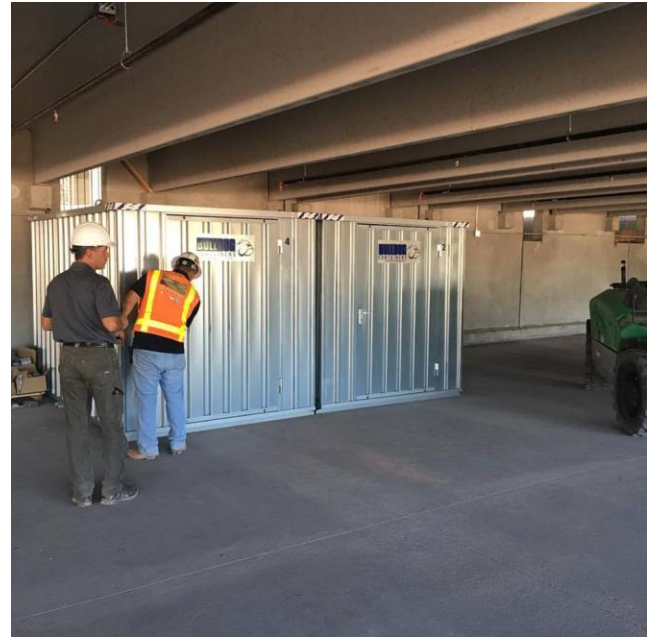
Fire and flood clean up – Payson, AZ

Disaster recovery – Maui, HI

In both instances above the units were delivered in places with difficult access.



Commercial construction site, Atlanta, GA. Sidewalks and asphalt work were just finished and fresh. The placement of ModalART unit did not damage the pavement.



Electric contractor, Phoenix, AZ. Units were delivered in a space where nothing else would have fit in.

modal**ART**

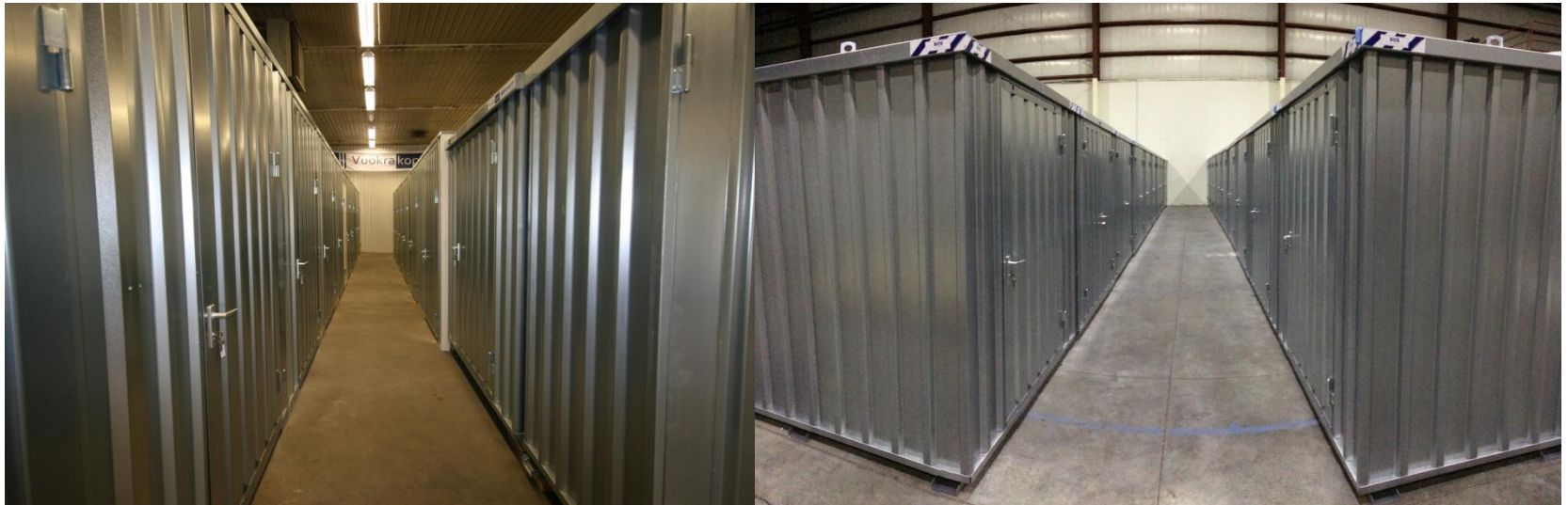
Construction Sites – Manhattan, NY



Construction Sites – Manhattan, NY

modal**ART**

Self-Storage – Finland & Michigan



Self-Storage - Finland

Self-Storage – Detroit, MI

In both cases above an old warehouse had been re-deployed as a storage facility.

modalART Self-Storage – WA & Germany



Outdoor Self-Storage – North Bonneville, WA

modal**ART**

End Users – other 1.



Heavy Equipment Dealer, PA



Lapland, Sweden

modalART End Users – other 2.

Left: Sauna - Finland

Below: Office - Finland





Accessories for the ModalART Quick Build Container

modalART

Available accessories are:

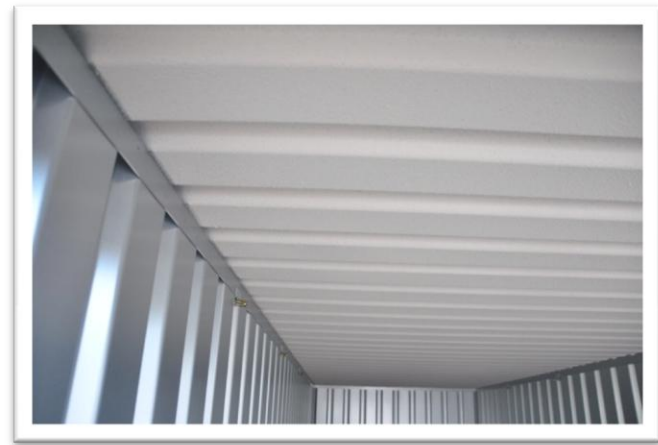
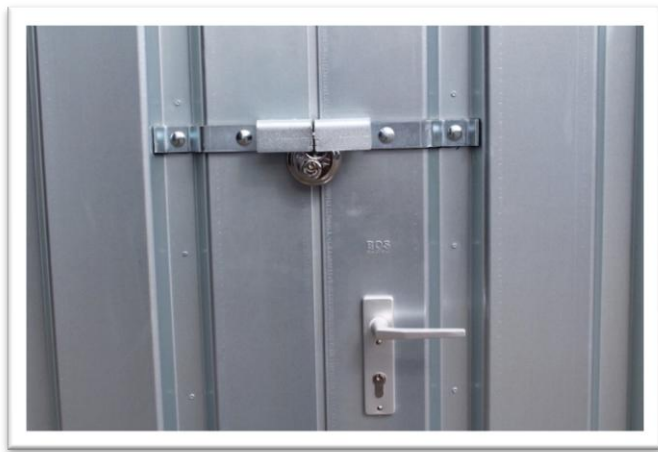
- 4-way forklift pocket system (right)
- Shelving systems – three different length shelves available (below)
- Access ramps - two sizes available (below right)



modalART

Available accessories are (cont.):

- Security bar (right)
- **Security lock (below) – included**
- **Anti-condensation coating (below right) - included**



modalART

Available accessories are (cont.):

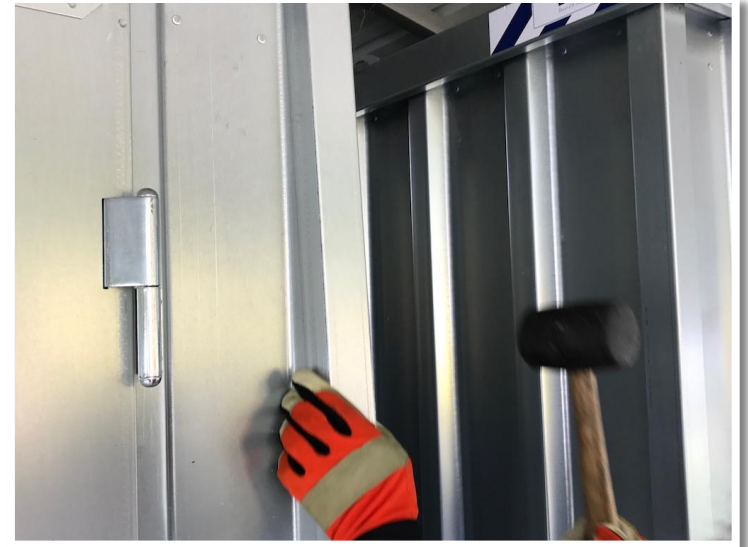
- Cable/hose hanger (right)
- Tool rail (below)
- Clothing rail (below right)



modalART

Available accessories are (cont.):

- **Corner caps for increased rigidity – included (right)**
- Sliding window with shutters (below)
- Skylight panel (below right)



modalART

Some of the Accessories:

- Connection kit – two 13' x 7' containers are being assembled separately (right)
- After the assembly, the units are connected together (below)
- Finished container – 27' x 7' (below right)





Transportation and Delivery of ModalART Quick Build Units

modalART Flat-packed Delivery



modalART

Handling and Delivery



Factory direct shipments are by sea container. Land deliveries are best done by flat beds or trailers. Units can be easily handled with forklifts or cranes.



Availability and Technical Data for
ModalART Quick Build Containers

modalART Availability

ModalART units and accessories are available at five warehouses in the USA:

- Atlanta, GA
- Elizabeth, NJ
- Elk Grove Village (Chicago), IL
- Flower Mound (Dallas), TX
- Carson (Los Angeles), CA

The available units are:

3' x 7', 7' x 7', 10' x 7' and 13' x 7'

All units will have:

Double doors, corner caps, an EBS-2 anti-vandal lock, anti-condensation coating as standard feature (please, see the accessory pictures).



Individual Component Weights in Lbs.

Unit size	Floor - OSB	Roof	Side wall (2x)	Front wall w/door	Back wall	Total weight lbs
3' x 7'	99	66	34	103	83	480
7' x 7'	198	110	77	163	83	709
10' x 7'	245	154	126	163	83	896
13' x 7'	317	198	154	163	83	1070

	3' x 7'	7' x 7'	10' x 7'	13' x 7'
Width exterior/interior	82.70" / 77.75"	82.70" / 77.75"	82.70" / 77.75"	82.70" / 77.75"
Depth exterior/interior	43.40" / 38.80"	82.70" / 77.75"	122.05" / 117.70"	161.40" / 156.50"
Height exterior/interior	82.70" / 76.15"	82.70" / 76.15"	82.70" / 76.15"	82.70" / 76.15"
Weight lbs.	480	710	900	1070

modalART Technical Details

Total weight capacity of the units are:

- 3' x 7' – 1 ton, or 2,200 lbs.
- 7' x 7' – 2 tons, or 4,400 lbs.
- 10' x 7' and 13' x 7' – 3 tons, or 6,600 lbs.

The above numbers include the container's own weight.

For example, a 10' container roughly weighs 900 lbs. and can be filled with another 5,700 lbs. and still be lifted by crane.

Forklifting the units is approved for up to 2 metric tons, or 4,400 lbs.

Snow load capacity is 43 lbs./ft², or 210 kg/m².

Floor is made of 3/4" (18mm) OSB 3 wood, which has been treated for moisture and insects.
Weight bearing capacity for the floor is 100 lbs./sq. ft. (500 kg/m²)

Wind load is approved for up to 100 mph (or 160 km/h). However, the units must be anchored to the ground.

Material used for the containers is 20 gauge, or 0.8mm galvanized steel which is made of recycled material. Metal of the floor section is 12 gauge, 2mm thick.

Flat packed units can be stacked seven high for transportation, and up to 10 units high for storage.

Assembled, fully loaded units can be stacked three units high outdoors, and four units high indoors. The load inside the units must be evenly distributed.

Every container comes with a door handle and has a cylinder lock equipped with three keys.

Security of the unit can be enhanced by installing a security lock (EBS-2).

Detachable panels can be carried to the job site, and even in constrained spaces. Assembly and knock-down of units can happen on site, and even in tight spaces.

Easy to repair: Detachable panels can be replaced individually if damaged.

At the Factory – Best Of Steel

Emsdetten, Germany

modalART

Galvanized, recycled steel is used to manufacture ModalART Quick Build containers.

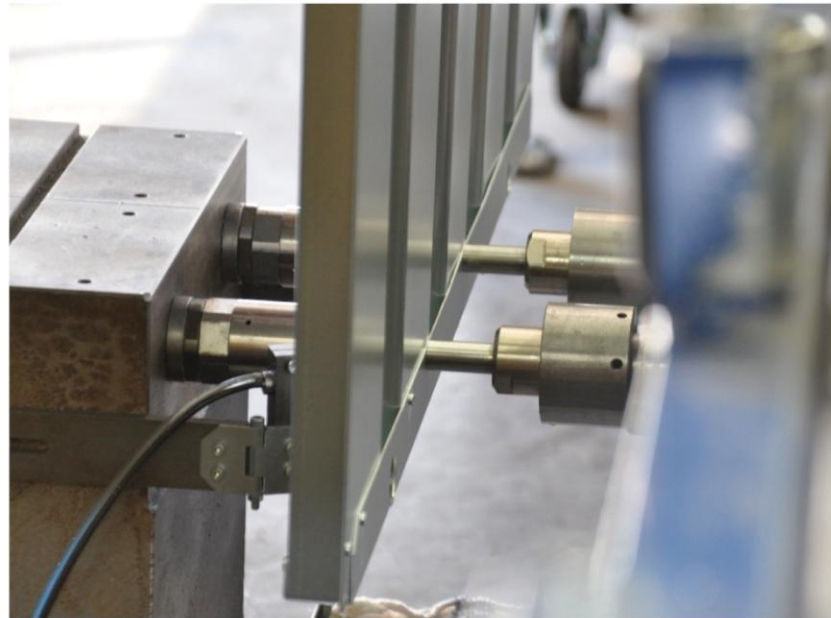
- Clean working environment (right)
- New steel rolls (below)
- Steel is cut to the size (below right)



modalART

Highly automated manufacturing processes and low employee turnover are fortified by compliance with industrial standards:

- DIN EN ISO 9001 Quality management
- DIN EN ISO 14001 Environmental Management
- BS OHSAS 18001 Safety Management



modalART

The journey of ModalART containers from the factory to the US customer:

- Loading into a flat bed trailer for a trip from Emsdetten, Germany to Rotterdam, Holland (right).
- Palletizing, and loading into a sea container at our freight forwarder in Rotterdam (below).
- After unloading 28 ModalART 10' x 7' containers in Texas (below right).



After 50 years of operations, its highly trained staff has a very low turnover rate. This has guaranteed the delivery of consistent and reliable products supported by an:

1. Integrated Management system that is backed up by certifications from:
DIN EN ISO 9001: 2008 Quality Management
DIN EN ISO 14001: 2009 Environmental Management
BS OHSAS 18001:2007 Industrial Safety Management
2. Registered in the Eco-Management and Audit Scheme (EMAS).
3. Products are regularly inspected according to RAL-RG 611/5.

Based in Emsdetten, in the western part of Germany near the Dutch border, the company employs 450 people and is considered to be a market leader in the Pan-European market for steel frames and material containers.

modalART Safety First ...



From the movie "Safety Last!"
by Harold Lloyd - 1923 -

Our manufacturer has invested in a safe working environment to ensure that no one's health at the factory is compromised. This philosophy in safety carries over from production to concerns about the safety of its customers.

- **Good working conditions translate to higher productivity and lower turnover:** Compliance with BS OHSAS 18001:2007 Industrial Safety Management.
- **High morale and pride:** Is evidenced by the low turnover in staff and the low accident rate at the factory.
- **High quality production:** Compliance with DIN EN ISO 9001: 2008 Quality Management.
- **Clean working environment and minimal waste:** Compliance with DIN EN ISO 14001: 2009 Environmental Management; and registered with the Eco-Management and Audit Scheme (EMAS).
- All products are designed **for efficient deployment and space savings.**

The Elimination of Waste:

ECOPROFIT

Ecoprofit is an Ecological project for integrated environmental technology; a project which is part of Agenda 21 for the economic strengthening of businesses within the region of North Rhine-Westphalia. The focus is on environmental protection and the improvement of the environmental situation that translates into the reduction of costs.

Eco Management and Audit Scheme (EMAS)

The Eco Management and Audit Scheme represents a new type of environmental policy instrument which strengthens the responsibility of companies regarding their activities and environmental impacts. Our registration with the Eco Management Audit Scheme underlies a validated environmental statement. We are thus obliged to constantly improve our environmental performance and to publish our results. (REG.NO. DE-156-00086) (Environmental Statement 2010).

Improved Quality, Faster Customer Response, Better Efficiencies and Lower Inventories

Quality Management System DIN EN ISO 9001:2008

Our Quality Management is process orientated. All processes which have an input and output are termed main processes. Supporting these are the leading processes, resource management and surveying, analysis and improvement. We begin by aiming to increase value for our customer, and the results are measured by achieving a higher degree in product quality. The process chain begins with the customer and his conscious and unconscious wishes, and should lead to complete customer satisfaction.

Environment Management System DIN EN ISO 14001:2009

To protect the environment we use recycled materials and are continually reducing our energy consumption. These objectives are organized and regulated by our Environmental Management System.

Safe Working Environment

Industrial Safety Management BS OHSAS 18001:2007

The Industrial Safety Management System warrants the health and safety of our employees.

modal ART

shipping containers

ModalART

Quick Build Containers

(203) 570 0150

info@modalart.com

www.modalart.com

